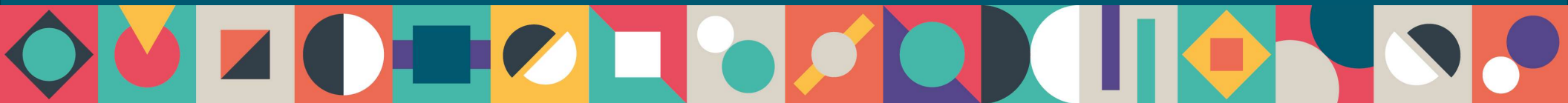




# Advance HE Update

MSDP, July 2022

Lucy Madahar, Head of Membership, Advance HE

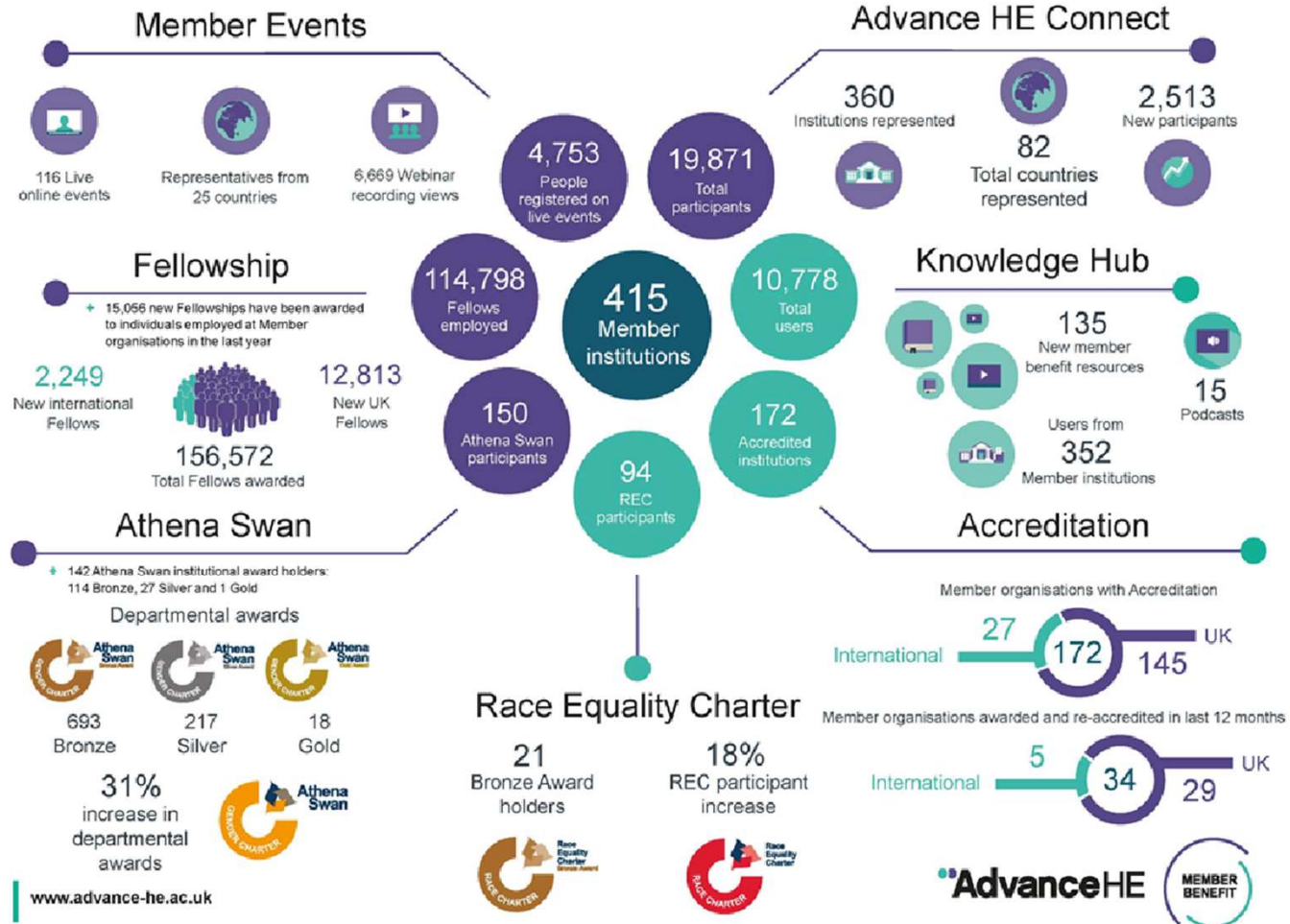


# Member engagement

1 April 2021 – 31 March 2022

The data in this report demonstrates the engagement with, and uptake of member benefits by our members during the period of 1 April 2021 - 31 March 2022.

How members have engaged with Advance HE over the last year



# Member engagement

1 April 2021 – 31 March 2022

The data in this report demonstrates the engagement with, and uptake of member benefits by our members during the period of 1 April 2021 - 31 March 2022.

How members have engaged with Advance HE over the last year

## Surveys

114 institutions are participating in the UK Engagement Survey, Postgraduate Research Experience Survey and Postgraduate Taught Experience Survey in 2021-22.

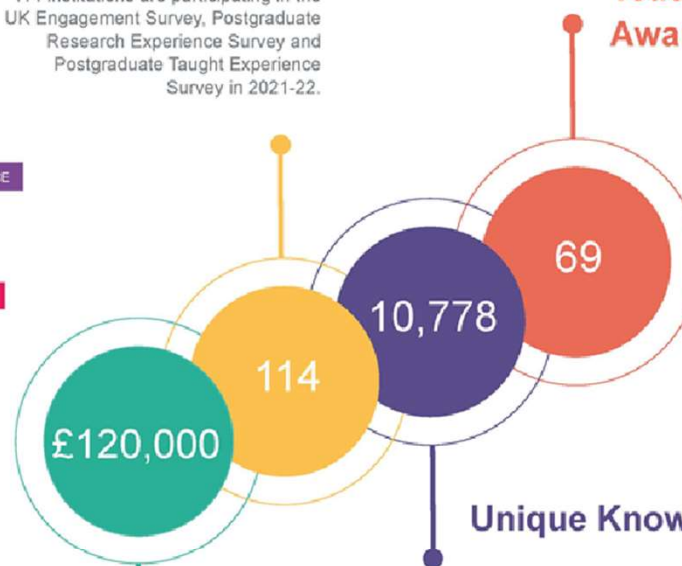


## Teaching Excellence Awards

55 NTFS winners



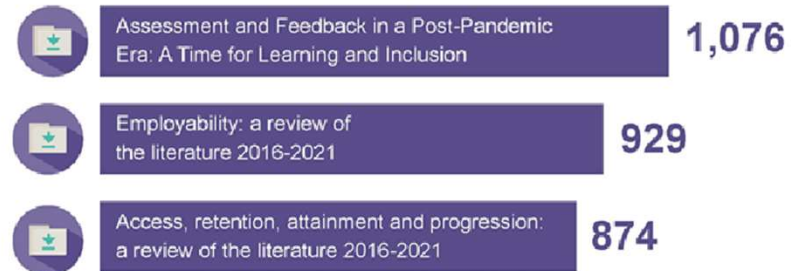
14 GATE winners



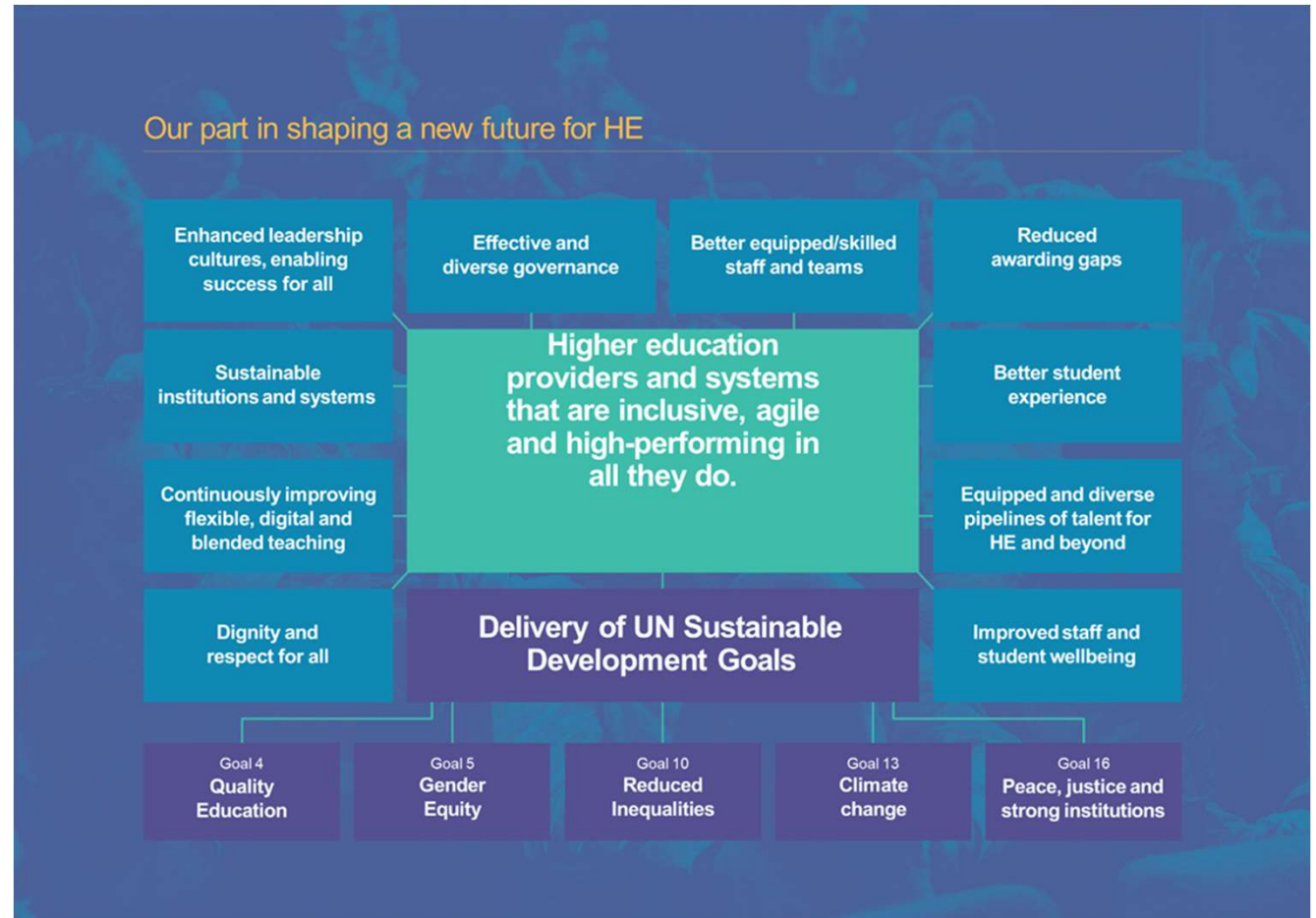
## Grants awarded

During the 2021-22 membership year, members received funding through our Collaborative Development Fund. Advance HE grant funding supports the development of our members by addressing key sector challenges.

## Most downloaded Knowledge Hub resources



There are many challenges facing HE institutions and research institutes and how we support members in this context has rightly informed the development of our recently launched **Strategy 2021-24**.



Membership for the coming year has been shaped through consultative conversations with our members and our strategic advisory groups.

We've heard clearly that members would value support:

- + navigating uncertainty and unlocking potential in their institutions
- + developing capability to lead and embed positive change across whole systems
- + maintaining and nurturing staff and student wellbeing
- + developing institutions and staff capability for post HE
- + rethinking online pedagogy and tackling hybrid operating models
- + transforming education and assessment to deliver the best student outcomes for transitions, retention and progression
- + creating inclusive places and experiences whilst managing inherent tensions

“

Advance HE brings us together as a sector to help tackle the 'bigger than us' challenges. Initiatives that support sector-wide enhancement such as Athena Swan, the Professional Standards Framework, Race Equality Charter, and the National Teaching Fellowship Scheme, add real value and strengthen us all. In the current climate it feels more important than ever for the sector to find means to collaborate to address the challenges we face, and Advance HE can help us achieve this together.”

Professor Becky Huxley-Binns PVC Education,  
University of Hull



## Membership for higher education providers in the UK 2022–23

### Working with you

#### Member projects

Initiatives designed to address contemporary challenges.

#### Governance expertise

A wealth of resources enabling effective governance.

#### Publications and resources

Exclusive access to the latest practical support from Advance HE and a bank of over 8,000 resources.

#### Collaborative Development Fund

Project funding supporting the development of our members by addressing key sector challenges together.

#### Equality, Diversity and Inclusion Advice Service

Support and guidance on policy, practice and concerns.

#### Student Surveys

Understand and enhance the student academic experience with discounted access to surveys.

#### Dedicated Advance HE Contact

Your Head of Membership is a direct contact and sounding-board with strategic understanding of your context, stakeholders and institutional objectives.

#### Strategic Advisory Groups

Member-led groups to ensure that we develop member benefits in the areas that deliver most value to you.

### Strengthening your membership

#### Professional recognition

Including the review of the Professional Standards Framework (PSF).

#### Global Leadership Survey

Further work to develop the survey and explore the potential of a recognition framework.

#### Student Success Framework Series

Next stages of the review and redesign of our Student Success Framework Series providing members with smarter ways of working for better student outcomes.

#### Equality Charters

Continued enhancement of our Charters whilst exploring approaches to integrated equalities for greater flexibility and efficiency in achieving inclusion.

#### Enhancement through digital development

Creating accessible digital learning opportunities as benefits of membership.

## Accreditation options

Supporting your strategic development and providing assurance to your stakeholders that your organisation strives for excellence



## Connecting our members

### DVC-PVC Network

The Advance HE members-only DVC-PVC Network is a highly valued and influential community of DVCs, PVCs and equivalent senior leaders.

### Advance HE Connect: Connecting people, networks and communities

Advance HE Connect is an online network exclusively for the HE sector with over 19,000 participants from member organisations around the world.

### Charters networking events

Charters networking events provide support to institutions embarking on, or in the process of, applying for an Athena Swan or Race Equality Charter award.

### Teaching Excellence Awards

The members-only National Teaching Fellowship Scheme (NTFS), and the Collaborative Award for Teaching Excellence (CATE) showcase the impact of individuals and teams who teach or support learning in UK higher education.

## Discounted access

- + 50% discount on all fees related to direct Fellowship applications for individual members of staff
- + 25% discount on our wide portfolio of programmes, conferences and events developed to meet the needs at specific career stages
- + 10% member discount on bespoke consultancy services which support institutions to shape and deliver their strategic priorities
- + Discounted total price of £2,500 which covers UKES, PTES and PRES Student Surveys.



[www.advance-he.ac.uk/membership](http://www.advance-he.ac.uk/membership)

# Strengthening your Membership

## Professional recognition

### Review of the Professional Standards Framework (PSF)

Advance HE is currently facilitating a sector-led review of the Professional Standards Framework (PSF) to ensure this strategically important framework continues to be inclusive, relevant for the future needs of HE, and accessible to a global community. A revised PSF ensures members will benefit from the most impactful accreditation services. Individuals will in turn, benefit from more flexible approaches to their professional recognition and have access to global communities to continue their development.

[Find out more about the PSF Review](#)

### Global Leadership Survey and Framework

2022-23 will see the continuation of our work to create a global leadership framework which will articulate the dimensions that contribute to effective leadership. Scoping and sector consultation generated a unique evidence base, highlighting contextual variations across the global sector whilst exploring the impact of leadership development. Advance HE will continue to work closely with the sector and our members to determine the potential for a system of leadership recognition in line with this new innovative framework.

[Find out more about the Global Leadership Survey & Framework](#)

## Equality Charters

### Exploring approaches to integrated equalities

In response to your feedback, we have a key strategic commitment to determine the potential for an approach to integrating equalities. Member-led scoping and exploration is underway and will determine if and how this approach could provide greater choice, flexibility and efficiency to achieve your vision for inclusion.

### Charters development

Work to enhance both the Athena Swan Charter and the Race Equality Charter continues in parallel to the consideration of an additional integrated approach. You will continue to receive support in implementing the transformed Athena Swan Charter and we will continue to work with you to launch the enhanced Race Equality Charter by the end of 2022.

## Student Success Framework Series

### Review and redesign

2022-23 will see the next stages of review and redesign of our research informed Student Success Framework Series, which used in combination, help to identify smarter ways of working for better student outcomes. Focusing on the two key areas of Student Success in an era of living with Covid and Transformation and Systems Change, the project will see all eight Student Success Frameworks and the associated toolkits updated.

[Find out more about the Student Success Framework Series](#)

## Enhancement through digital development

### New e-learning modules

Our members are increasingly seeking accessible, affordable digital learning opportunities for their staff and students. With sector resources at a premium and needing to be carefully targeted at achieving maximum impact, we are working with members to create a series of member benefit e-learning packages focused on core topics you have asked us to prioritise. The first in this series is scheduled for launch to members during 2022-23.

**Advance HE**  
will be developing 20 e-  
learning modules over  
the next 2 years, with 10  
modules free to  
members



# Member Benefit Themes 2022/23

Your feedback shapes our member benefits package. These projects provide the opportunity for members to collaborate with each other and Advance HE on contemporary challenges faced by the sector to co-create new and practical solutions

## Sustainability: Realising the Ambition

Sustainability will act as a lens for all member projects in 22-23, helping our members take strategic action to progress towards the United Nations' Sustainable Development Goals (SDGs) and a sustainable future.

## Good Campus Relations and Freedom of Speech

Helping members to create inclusive institutions and improve campus relations between different groups, whilst supporting and protecting freedom of speech and academic freedom.

## Beyond Flexible Learning

Supporting members to apply the learnings from recent years to design and deliver flexible and mixed mode learning that works for their students in their contexts.

## Student Outcomes

In an era of increasing regulation this work will focus on student outcomes and what success looks like for different stakeholders. Considering global perspectives, we will support members to navigate the evidence base available to inform education strategies, demonstrate value for money and maximise outcomes for all.

“  
Advance HE brings together staff and students in different roles, different institutions and different countries, across a huge diversity of highly relevant and useful topics. They are the springboard for very exciting and developmental conversations.”

Feedback from a 2021 member project event.

## Governance Enhancement Projects

Our governance projects will include a focus on 'Academic Governance and Assurance', as well as 'Measuring Institutional Performance' – exploring what the future Board KPI dashboard might look like. We will also re-run the 'Supporting Inclusive Boards Community', which we initially ran with GuildHE last year.

## International Higher Education: What Next?

Global uncertainty has caused many institutions to re-evaluate their strategic direction and ambitions. The impact on international student numbers and experience, a growing focus on SDGs, along with a realisation of the potential for mixed mode education prompt a reconsideration of traditional approaches.

## Leadership for the Future

Exploring and understanding the emerging challenges for leadership in HE alongside the ongoing development and evaluation of the HE Leadership Survey and Framework.

## Tertiary Education

Comparing different and divergent national approaches and helping members consider their own context and the possible implications and opportunities.

