

 **AdvanceHE**





Vision & Change:

Looking to the Future with Advance HE

Tracy Bell-Reeves, Director Programmes and Events

What is the most important leadership attribute you think we will require in HE looking ahead to the 4th industrial revolution: (choose 2 max)

- Emotional intelligence
- Agile thinking
- Financial acumen
- Technologically/digitally aware
- Empathy
- Intellectual dynamism
- Creative thinking
- Visioning
- Building future leaders

AdvanceHE

Advance HE

The journey

*Future
Horizons*



About Advance HE

The Advance HE Quiz!

Which 3 organisations merged to form Advance HE earlier this year?

1. JISC
2. HESA
3. ECU
4. UUK
5. LFHE
6. UCEA
7. HEA

Why did the merger happen?

1. Staff voted for it
2. Vice Chancellors said it should happen
3. HEFCE directive ahead of OFS change
4. The Bell Review
5. Seemed a good idea



Progress so far

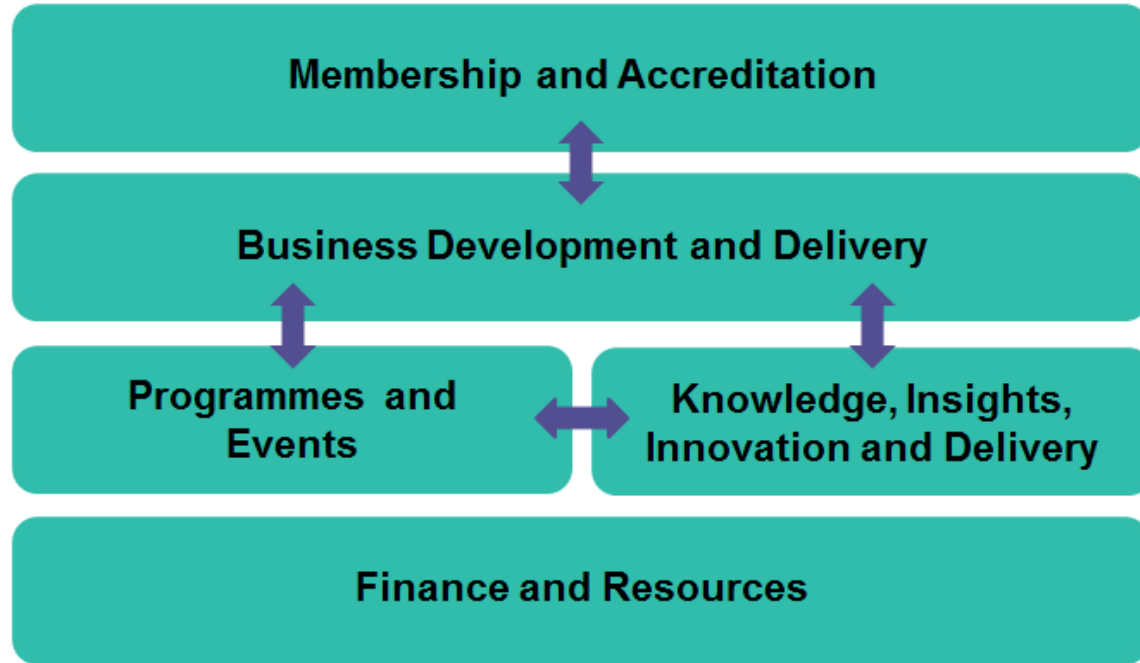
- Formed through the merger of the Equality Challenge Unit, Higher Education Academy and Leadership Foundation for Higher Education in March 2018
- First full year of operation from August 2018
- Transition year 2018-19 with an integrated holistic offer for 2019-20



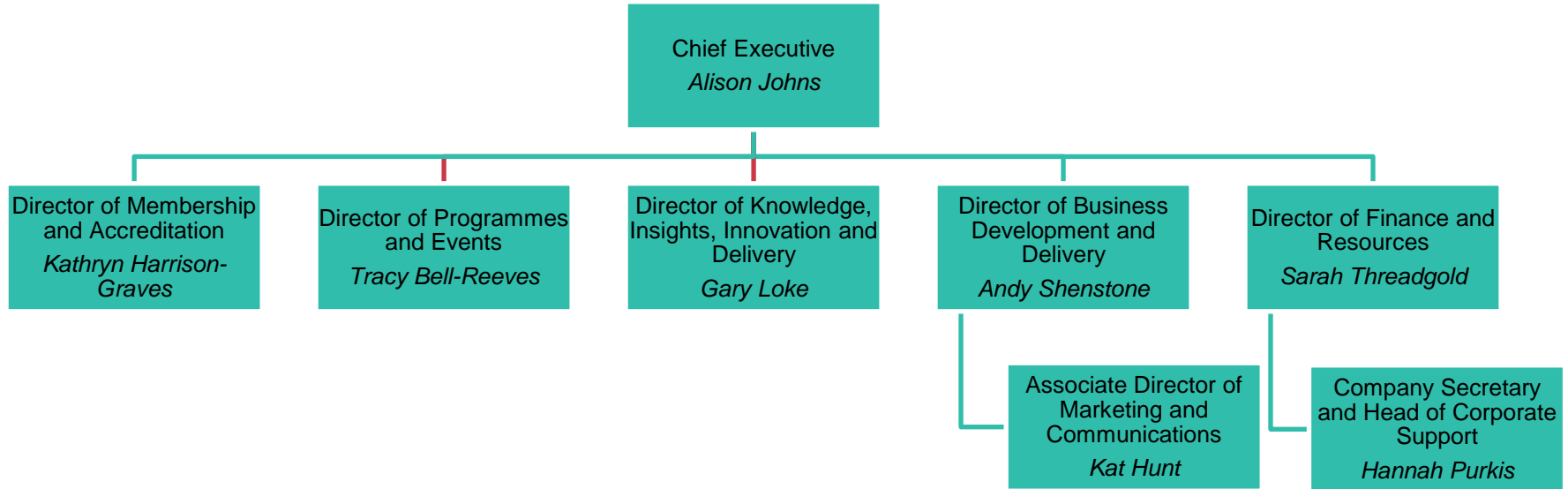
Our purpose

- We support and enable **higher education providers** to put institutional strategy into practice for the benefit of students, staff and society.
- We bring together HE-focused expertise in ***teaching and learning, equality, diversity and inclusion, leadership and governance***, to help you to deliver world-leading teaching, research and scholarship, your civic mission and student outcomes at your institution.
- We do this through the provision of **specialist knowledge and resource, externally recognised benchmarking and recognition schemes** and a member-focused, collaborative approach.

Advance HE – how are we organised?



The Chief Executive's Group



The Chief Executive's Group



Alison Johns
Chief Executive



Kathryn Harrison-Graves
Director of Membership
and Accreditation



Tracy Bell-Reeves
Director of Programmes
And Events



Gary Loke
Director of Knowledge, Insights,
Innovation and Delivery



Andy Shenstone
Director of Business
Development and Delivery



Kat Hunt
Associate Director of Marketing
and Communications

Strategy 2019-2022

- Membership model – sustainable, valued
- Sustainable business model
- Consultation & Partnership
- To be the number 1 development agency of choice for higher education
- Articulate and embody our values for our staff and sector benefit



Future Focus



- Next generation leadership and governance
- Recognition and accreditation
- Supporting resolution of key sector challenges e.g. EDI
- Excellence that delivers for beneficial student outcomes
- Supporting through change at an individual and organisational level



SAGs – Thematic areas

Strategic Advisory Groups				
Learning and Teaching		Equality, Diversity and Inclusion	Leadership and Management	Governance
Thematic Meetings (examples)	Civic Mission			
	Student Experience and Outcomes			
	Mental Health and Wellbeing			
	HE Reform			



Strategic priorities for our members

1. Recognising and improving teaching quality
2. Implementing good governance
3. Recognising and encouraging equality, diversity and inclusion
4. Establishing strong, effective and sustainable leadership
5. Establishing, protecting and developing reputation
6. Responding positively to regulation
7. Options to enable self-assessment and constructive critique

What we do



AdvanceHE



AUORA
FUTURE • CHANGE • GROWTH

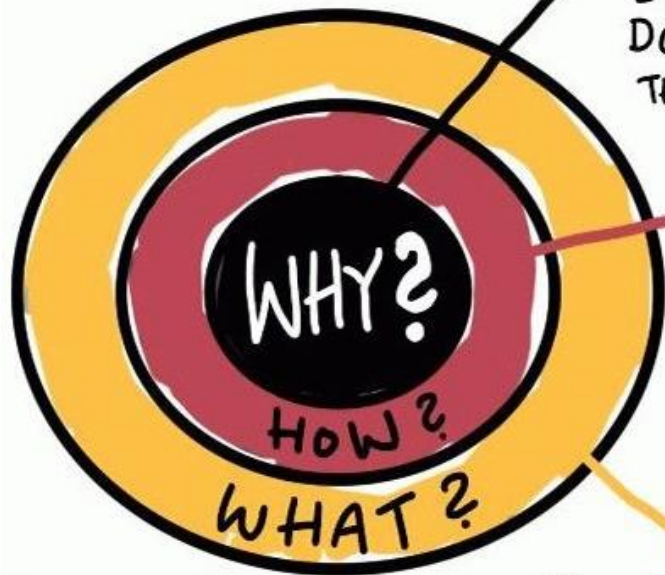


Insights from a voyage: The Advance HE Journey – vision & change



1

GOLDEN CIRCLE

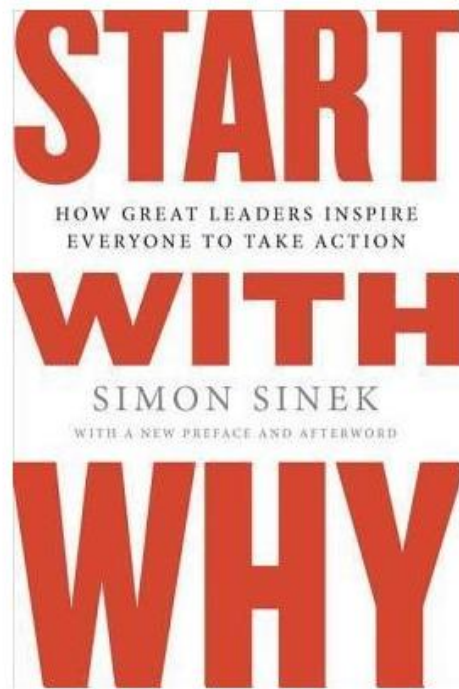


IDEA: SIMON SINEK

WHY DO YOU
DO WHAT YOU
DO? WHAT'S
THE PURPOSE?

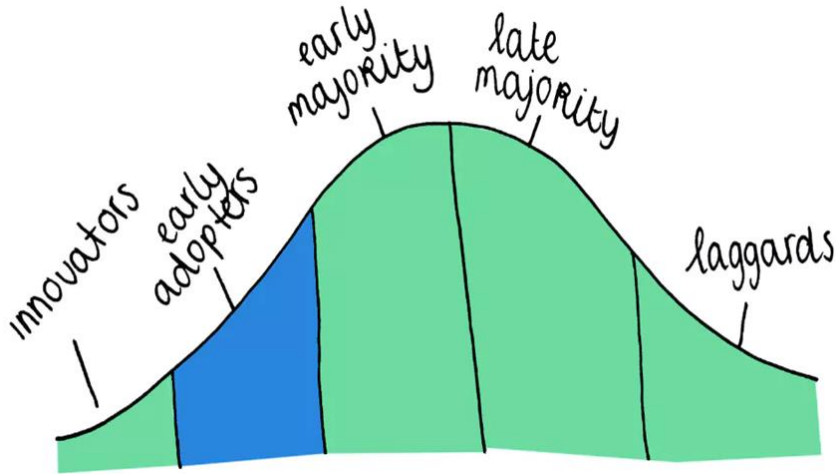
HOW
DO YOU
DO WHAT
YOU DO?

WHAT
DO YOU DO?



2

Blessed are the cheesemakers (or early boarders)



Create a band, not an orchestra

3



4

Keep your friends close..



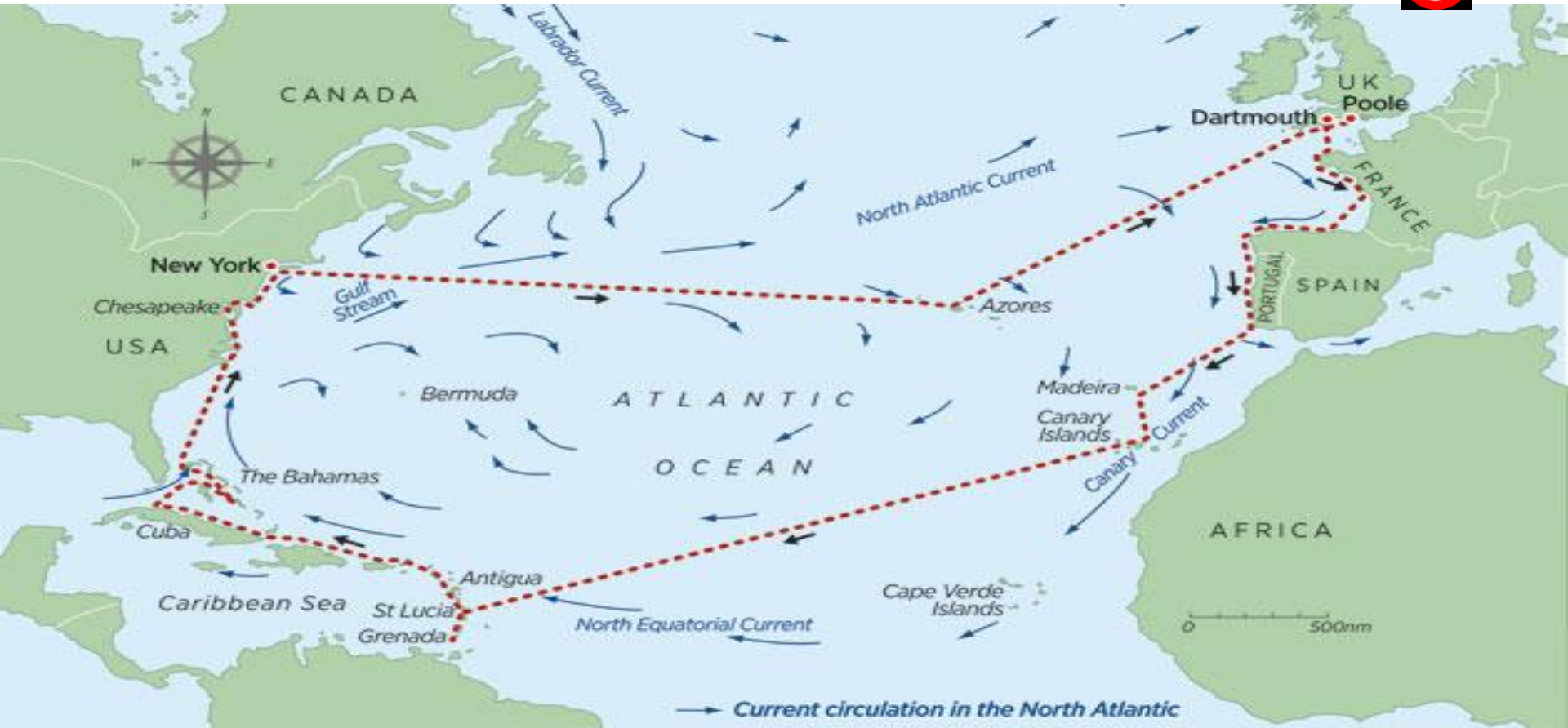
5



Know where
your crew
are

Celebrate an early win

6



Unfreeze, Change, Refreeze

7





Waving not drowning:
Change can be for the good,
even when it is mandated not
elected.

Advance HE – Future Horizons

Athena Swan review

Subject centres

Membership model 2019/20



Consultation in
process

Programmes & Events review:

- 3 year plan
- Priority for 2019/20
- 4th Industrial Revolution – the leader for the future

Your view of Advance HE – Programmes and Events

1. What are your key requirements from Advance HE programmes and events?
2. What are your key leadership development challenges that you are looking for help with?



Get involved: tracy.bell-reeves@advance-he.ac.uk

The greatest danger in times of turbulence is not the turbulence, it is to act with yesterday's logic

Peter Drucker

We must free ourselves of the hope that the sea will ever rest. We must learn to sail in high winds.

Aristotle Onassis



For more information
www.advance-he.ac.uk
in f @AdvanceHE

